

# It's tough to spot a problem if you can't see it.

## LOGIQ®*e* for Musculoskeletal Ultrasound

The LOGIQ *e* system gives you the power to take a hands-on approach to musculoskeletal imaging. With real-time anatomy and needle enhancement. And the flexibility to customize your system and fine-tune your images. So you can diagnose, treat and monitor diseases and injuries over time. This helps provide more confidence for you and improved care for your patients.

Expand from routine to advanced imaging. A variety of premium technologies helps you manage the complexities of musculoskeletal ultrasound including dynamic and deep imaging, as well as guided therapeutic injections and aspirations. You can be confident that your patient is on the right treatment plan with the LOGIQ *e*.

Exquisite image quality to help evaluate all tissue structures of the musculoskeletal system.

- A powerful processor provides smooth, clear imaging to reflect real-time anatomical or probe motion. It gives you the ability to add Color Mode, while maintaining gray scale image quality.
- Exclusive B-Steer+ technology enhances needle visualization.
  - ◆ See the needle tip clearly—without specialized needles or extra equipment.
  - ◆ Easily track the needle at various angles and depths, for more precise placement.
  - ◆ Activate this standard feature with one button.
- CrossXBeam™ helps sharpen the contour of bone, tendon, ligament, and muscle detail—as well as visualization of the needle.
- Speckle Reduction Imaging diminishes the inherent speckle (noise) improving contrast resolution.



Portable docking station



# LOGIQ e Musculoskeletal

## Advanced, yet so easy to operate.

- Simultaneous Split Screen allows side-by-side viewing of anatomy, both contralateral and historical scans. Also can recall saved images and compare to real-time scanning for assessing progress.
- LOGIQview provides panoramic imaging up to 60 cm for ligaments, tendons and muscles in long-axis.
- Raw data allows flexibility to manipulate stored images, add annotations, measure, and optimize images—even after the procedure.
- Intuitive presets by procedure and body part—with the flexibility to create and save your own settings. Helps obtain a clear image the first time.
- AutoClarity Suite provides easy image optimization at the touch of a button, with the flexibility to fine-tune your image:
  - ◆ Auto Depth automatically adjusts the corresponding frequency and focal zone position, for clarity throughout the near and far field.
  - ◆ AutoOptimization delivers contrast resolution in B-Mode and optimizes spectral Doppler modes.

## Expand to perform a range of procedures and care for a broad spectrum of patients.

- Clear superficial imaging in the 1 to 2 cm range for visualizing inflammation, small vessels or bone erosions, as well as needle placement.
- Needle guides for the 12L-RS linear probe help to maintain needle angle for in- and out-of-plane approaches. Easy to snap on/off the probe.
- High sensitivity Color and Power Doppler helps detect and assess inflammation early and accurately.
- Deep imaging capability for larger patients and pain management procedures.

## Efficient data management and connectivity.

Documentation is easy over a wired or wireless network.

- EMR—QuickSave stores non-DICOM images/reports to a USB device or a network shared folder for attaching to EMR.
- PACS—transfers DICOM\* images seamlessly to PACS.
- Print—on a cart printer or HP-supported network printer.

Flexible option for patient entry:

- DICOM Worklist\*—pick patient from a pre-scheduled worklist and scan.

## Options help extend your reach.

- Two ergonomic, height-adjustable carts.
  - ◆ Portable docking station provides three probe connections.
  - ◆ Streamlined cart fits into tight spaces, with locking drawer for secure storage.
- Monitor on articulating arm for ergonomic alignment of screen, probe and patient.

## Support helps you maximize the possibilities.

A valuable complement to your dedicated service team, InSite® ExC is our powerful connectivity product feature that directly connects GE medical devices and their users to LiveAssist clinical applications and technical support experts.

GE also offers customized training programs and a wide range of accessories and supplies. Contact us to learn more or schedule a demonstration.

\*Requires optional DICOM license.

GE Healthcare  
9900 Innovation Drive  
Wauwatosa, WI 53226  
U.S.A.  
888 526 5144

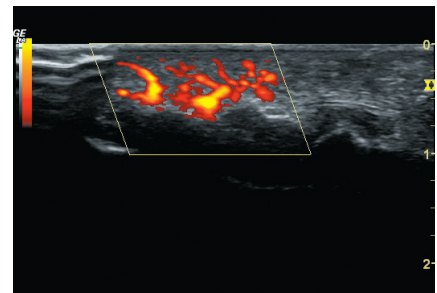
[www.gehealthcare.com](http://www.gehealthcare.com)



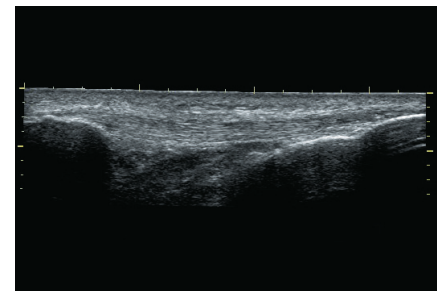
imagination at work



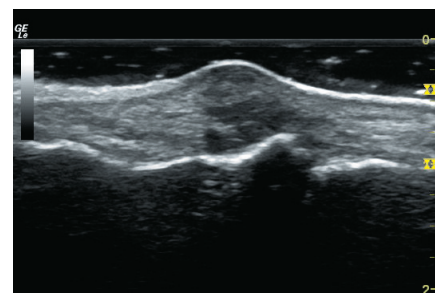
Streamlined cart



Power Doppler Imaging of the distal digit using the 12L-RS transducer.



LOGIQview of the Patellar Tendon using the 12L-RS.



Rheumatoid Arthritis Nodule of the digit using the 12L-RS.

©2010 General Electric Company – All rights reserved.

General Electric Company reserves the right to make changes in specifications and features shown herein, or discontinue the product described at any time without notice or obligation.

GE, GE Monogram, CrossXBeam, InSite and LOGIQ are trademarks of General Electric Company.

GE Medical Systems Ultrasound & Primary Care Diagnostics, LLC, a General Electric Company, doing business as GE Healthcare.

ULTP-0459-10.10-EN-US